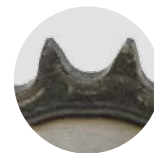
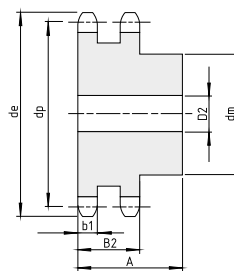
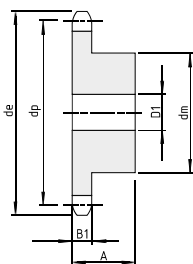
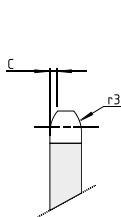


Koła łańcuchowe

Koła łańcuchowe z piastą i utwardzonymi zębami dla łańcucha rolkowego

DIN 8187 - ISO / R 606



Materiał: stal C45			1" x 17,02 mm					podziałka 25,4 mm		B1	B2	b1	C	r3
									16,2	47,7	15,8	2,5	26	
Z	de	dp	1-rzędowe 16B-1					2-rzędowe 16B-2						
			kod	dm	D1	A	[kg]	kod	dm	D2	A	[kg]		
8	77,90	66,37	P0695H	42	16	35	0,47	P0737H	42	16	65	0,81		
9	85,80	74,27	P0696H	50	16	35	0,66	P0738H	50	16	65	1,15		
10	93,80	82,19	P0697H	55	16	35	0,83	P0739H	56	16	65	1,52		
11	101,70	90,14	P0698H	61	16	40	1,14	P0740H	64	20	70	2,08		
12	109,70	98,14	P1254H	69	16	40	1,43	P0741H	72	20	70	2,60		
13	117,70	106,12	P1255H	78	16	40	1,77	P0742H	80	20	70	3,18		
14	125,70	114,15	P1256H	84	16	40	2,08	P0743H	88	20	70	3,82		
15	133,70	122,17	P1257H	92	16	40	2,46	P0744H	96	20	70	4,51		
16	141,80	130,20	P1258H	100	20	45	3,14	P0745H	104	20	70	5,17		
17	149,80	138,22	P1259H	100	20	45	3,33	P0746H	112	20	70	5,98		
18	157,80	146,28	P1260H	100	20	45	3,56	P0747H	120	20	70	6,84		
19	165,90	154,33	P1261H	100	20	45	3,78	P0748H	128	20	70	7,76		
20	173,90	162,38	P1262H	100	20	45	4,03	P0749H	130	20	70	8,52		
21	182,00	170,43	P1263H	110	20	50	5,01	P0750H	130	25	70	9,24		
22	190,10	178,48	P1264H	110	20	50	5,28	P0751H	*130	25	70	10,00		
23	198,10	186,53	P1265H	110	20	50	5,56	P0752H	*130	25	70	10,80		
24	206,20	194,59	P1266H	110	20	50	5,86	P0753H	*130	25	70	11,64		
25	214,20	202,66	P1267H	110	20	50	6,16	P0754H	*130	25	70	12,52		
26	222,30	210,72	P0713H	120	20	50	6,96	P0755H	*130	25	70	13,43		
27	230,40	218,79	P0714H	120	20	50	7,30	P0756H	*130	25	70	14,38		
28	238,40	226,85	P0715H	120	20	50	7,64	P0757H	*130	25	70	15,38		
30	254,60	243,00	P1268H	120	20	50	8,38	P0759H	*130	25	70	17,48		
32	270,70	259,13	P0719H	*120	25	50	9,09	P0761H	*140	25	70	20,10		
34	286,90	275,28	P0721H	*120	25	50	9,93	P0763H	*140	25	70	22,21		
35	294,90	283,36	P0722H	*120	25	50	10,36	P0764H	*140	25	70	23,77		
36	303,00	291,44	P0723H	*120	25	50	10,81	P0765H	*140	25	70	25,07		
38	319,20	307,59	P0725H	*120	25	50	11,76	P0767H	*140	25	70	27,79		
40	335,30	323,73	P0727H	*120	25	50	12,75	P0769H	*140	25	70	30,65		

*Spawana piasta.